



DIPARTIMENTO DI ARCHITETTURA
E DISEGNO INDUSTRIALE
LUIGI VANVITELLI

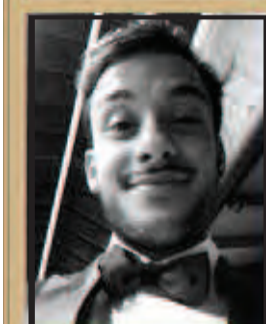
Seconda Università degli Studi di Napoli
Dipartimento di Architettura e Disegno
Industriale Luigi Vanvitelli



VINCENZO
MIGLIACCIO

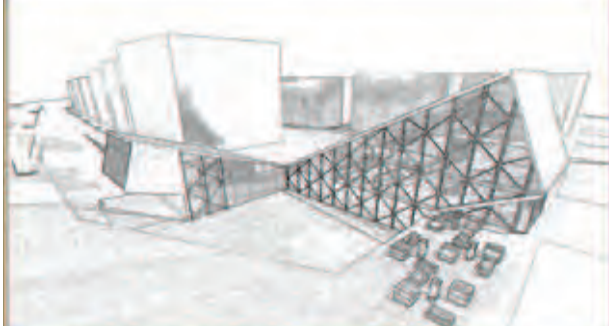


FABIO
ESPOSITO



GAETANO
DI SPIRITO

C. N. M.
Canakkale National Museum



Canakkale

DOCENTE: PROF. ARCH. CLAUDIO
GAMBARDELLA



INTERIOR DESIGN

We create and design by our own the
Canakkale's National Museum furnitures.
We used the wood's panels on horizontal way to
create them, with steel pilotis inside.

In



LIGHTING STRIP



The Strip Band lights the area with an uniform illumination effect.
With the perfect geometric shape lightning there's no loss area light



This technology allow you to be able to get more strategic point or in
less enlightened corners, giving the opportunity for creative design.
Rooms' geometry can be lit more tan normal condition and shining
could arrive better in all corners area.

Stereotype forms are an integral part of the appliance.

Thanks to Intelligent Design it's easy the Installation, They can be implant in the
Concrete Ceiling (as you can see in Our case) or suspend with tyrants.
All Functions as Power, Lighting Control System Connection with Emergency Lighting,
are integrated into prefabricated unity and you might adjusted by your own.



RESIN FLOORING

Resin Flooring has successfully used in many areas right now, their reached distribution
showing us how people entrust on this tecnology.
The System of Floor Resin is thebest way and tecnology that you can install for your
floor.

There's no limit for the installation : mechanical and chemical special floors, use it for the
low corner between walls and floor.



All Flooring are proposed to be performed on new sur-
faces for old floors even if they're very degraded.
The Floors' resin characteristics are composed by high
mechanical and chemical strenghts, water resistant.
It's easy and fast during the operations cleaning.
They're composed essentially an area which can sup-
port or be soaked with specific Resinous Layer for