



DIPARTIMENTO DI ARCHITETTURA E DISEGNO INDUSTRIALE
Luigi Vanvitelli

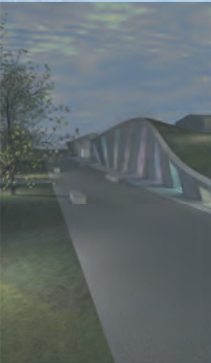
Seconda Università degli Studi di Napoli
Dipartimento di Architettura e Disegno Industriale
Luigi Vanvitelli
Corso di laurea in Architettura -
Progettazione degli interni e per
l'Autonomia
Insegnamento: ABB18 - INTERNO
ARCHITETTONICO
a.a. 2013/2014

GRUPPO

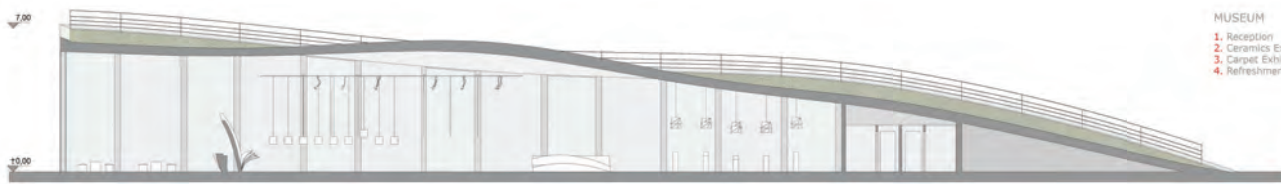


Filomena Marucci Marco Molit

PROGETTO

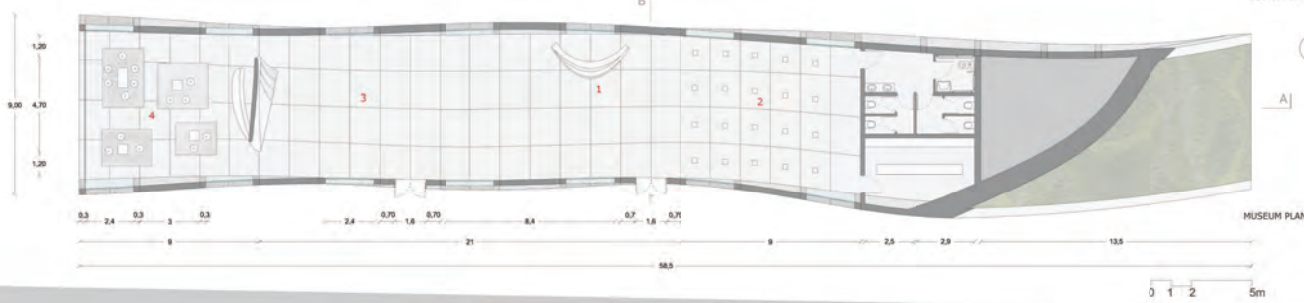


The Virtual Bridge
DOCENTE: PROF. ARCH. CLAUDIO GAMBARELLA



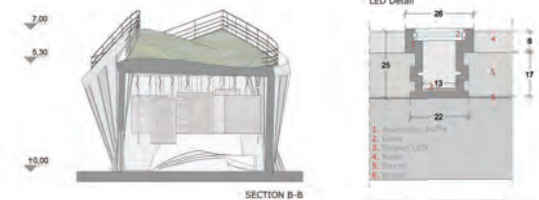
- MUSEUM
1. Reception
 2. Ceramics Exhibition
 3. Carpet Exhibition
 4. Refreshment Stand

SECTION A-A

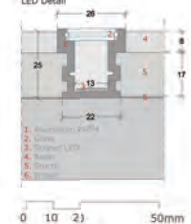


MUSEUM PLAN

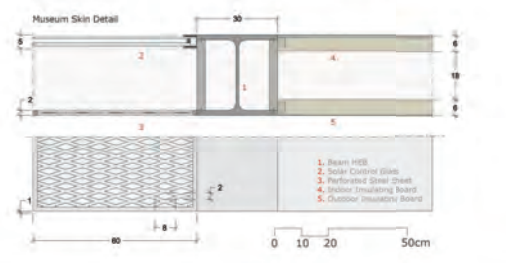
0 1 2 5m



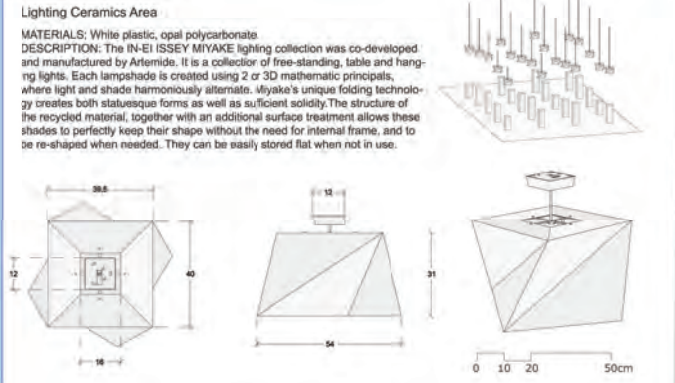
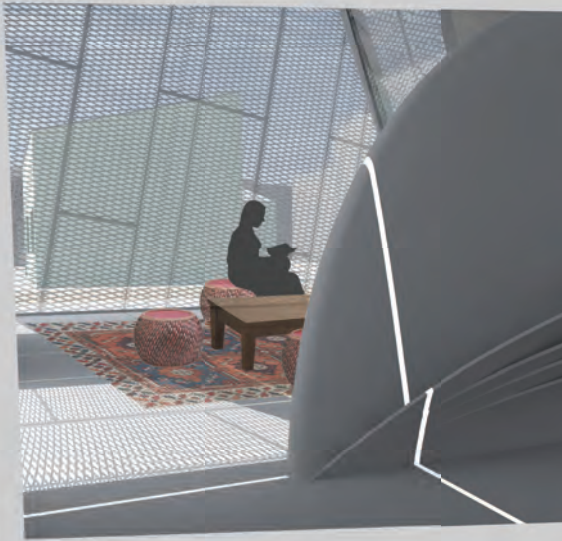
SECTION B-B



0 10 20 50mm

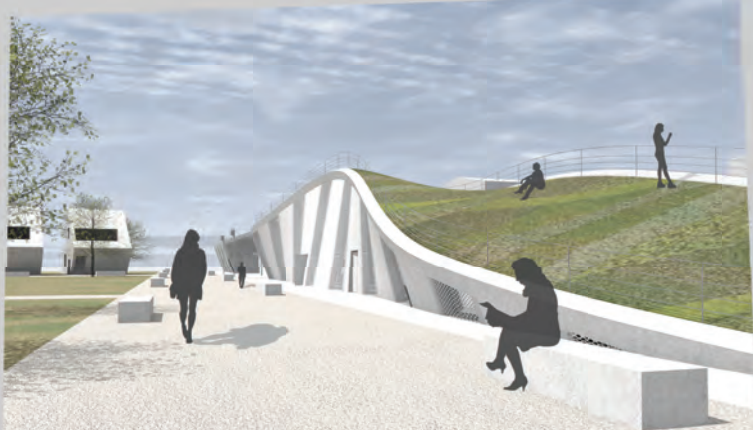


0 10 20 50cm

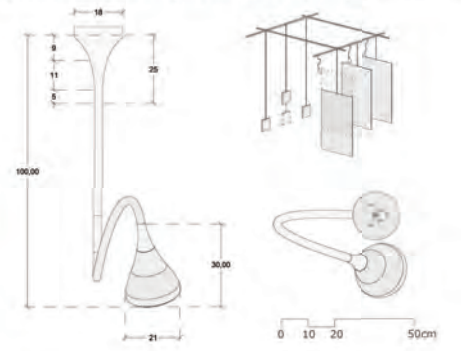


Lighting Ceramics Area

MATERIALS: White plastic, opal polycarbonate
DESCRIPTION: The IN-EI ISSEY MIYAKE lighting collection was co-developed and manufactured by Artemide. It is a collection of free-standing, table and hanging lights. Each lampshade is created using 2 or 3D mathematic principals, where light and shade harmoniously alternate. Miyake's unique folding technology creates both statuesque forms as well as sufficient solidity. The structure of the recycled material, together with an additional surface treatment allows these shades to perfectly keep their shape without the need for internal frame, and to be re-shaped when needed. They can be easily stored flat when not in use.



Lighting Carpet Area
MATERIALS: Steel, silicone, polycarbonate, steel
DESCRIPTION: Wall/ceiling lamp with flexible painted steel structure, covered with a natural anti-yellowing silicone case; wall attachment and diffuser in transparent rubber-effed painted polycarbonate; mirror aluminium reflector with random perforations; painted steel bottom plate.



0 10 20 50cm