



DIPARTIMENTO DI ARCHITETTURA E DISEGNO INDUSTRIALE
LUIGI VANVITELLI

Seconda Università degli Studi di Napoli
Dipartimento di Architettura e Disegno Industriale
Luigi Vanvitelli
Corso di laurea in Architettura - Progettazione degli interni e per l'Autonomia
Insegnamento: A8618 - INTERNO ARCHITETTONICO
a.a 2013/2014

GRUPPO



Luigi Bove

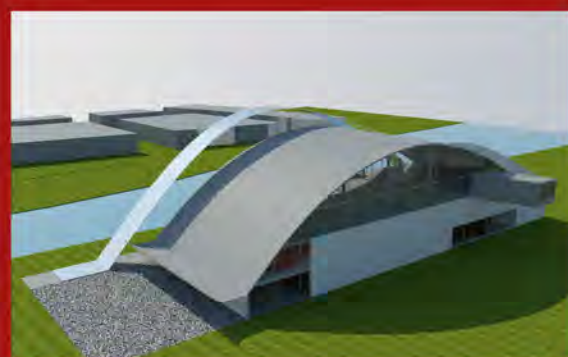
Domenico Di Domenico



Maria Margio

Mario Montano

PROGETTO



BRIDGE MUSEUM
DOCENTE: PROF. ARCH. CLAUDIO GAMBARELLA

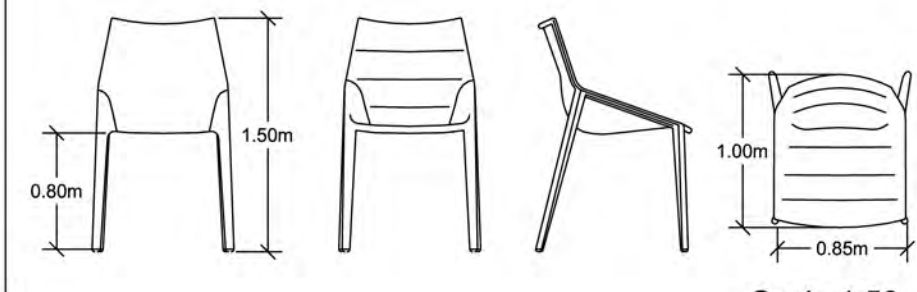
Designer_Karim Rashid Material_Corian Du Pont



Endless Nile is a product that is a synthesis of art and design. Karim Rashid, star of mondial design, for a object very surprising, table and chair together in a single tape Corian Du Pont. Simple as the color used (glacier white); pure but with beautiful facets which has also thanks to the materiale used.
Corian, Jewel of Du Pont, is a material more and more popular in the field of design. Karim Rashid was inspired by the slow and perpetual motion of the waters of the river Nilo, for a new concept.
One piece mounted on a steel structure, which winds and twists to create a table top.

Molteni & C

OUTLINE Designer_Arik Levy
chair / sedia



Scala 1:50

Chair with fibreglass resting on metal legs. Outline can be entirely covered with fabric or leather, or with upholstered frame and metals legs in two finishes. The chair covering is removable in all version. The version with fabric upholstered can be with or without the piping on the edge.

Technical information:

Structure_Frame in heat sealed, powder painted steel

Seat_Structure in moulded fibreglass

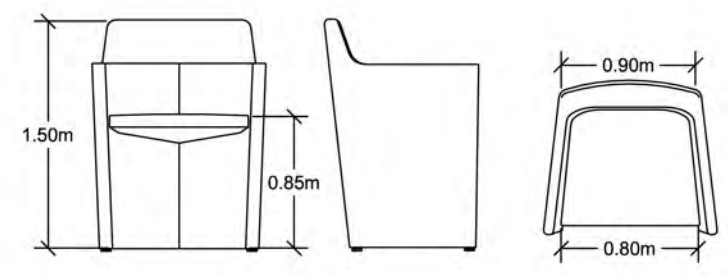
Carter_Sheet in cold folded and vaccum painted steel

Feet_Non slip plastic

Removable outer covers_see attached card, specific for each cover

Molteni & C

Lyz Designer_Rodolfo Dordoni
Armchair / Poltroncina



Scala 1:50

A modern reinterpretation of the classic tub chair. The chair is anchored at just one point to the rear structure and guarantees a flexible and comfortable seat. Impeccable upholstery tailoring.

Technical information:

Internal structure_Shaped metal frame

Seat interior_Metal sections

Structure and seat padding_Flexible cold-foamed polyurethane; matching light velvet cover with resin

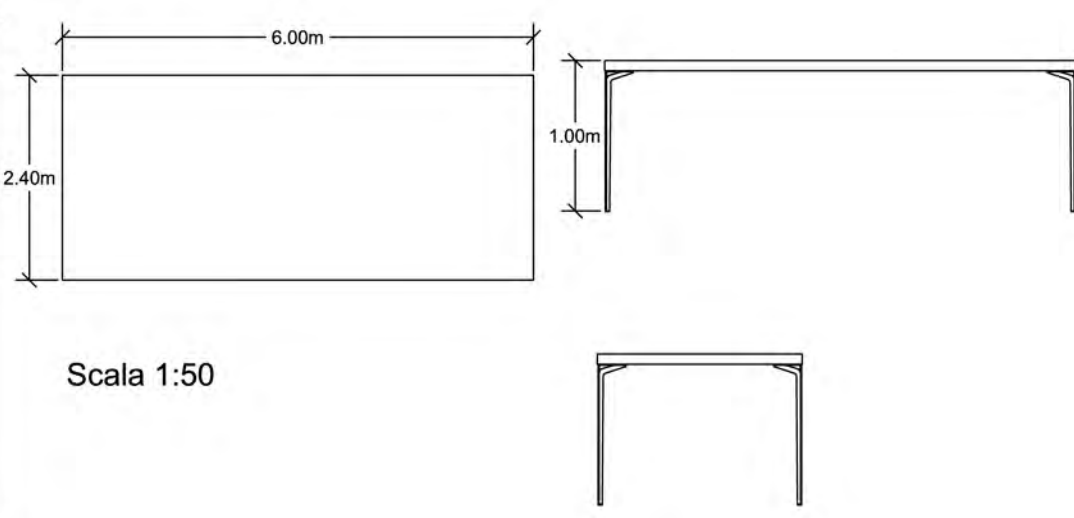
Feet_Chrome metal with non-slip plastic tips

Wheels_Plastic with steel support, rotation 360°

Removable outer covers_see attached card, specific for each cover

Molteni & C

Tea Time Designer_Arik Levy
Table / Tavolo



Scala 1:50

Tea Time table, characterised by the distinctive traits of Levy for this project: an original die cast aluminium leg, shiny chrome or matt black chrome, with airy design.

Technical information:
Leg_Folded and chromed sheet metal 5mm thick, with aluminium insert and adjustable metal foot with felt for floor placement
Top_Honeycomb core wood veneer (Ulmus rubra) or Oak (Quercus).



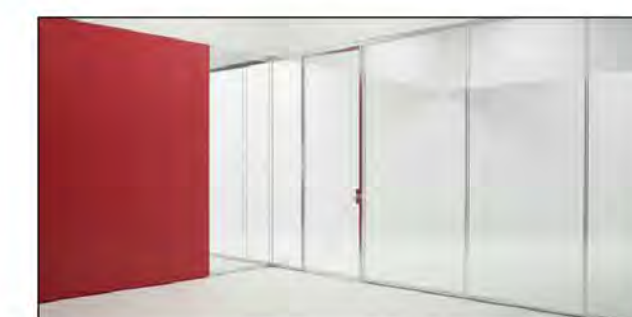
Model_Wall & Door
Colour_Amaranth



Hollow core hinged door, 55mm thick.
Door panel: unfinished with a primer coat, glass and matt lacquer from standard color range, vertically aligned veneers from standard range. Horizontal veneer on request.
Jamb and door frame in pre-assembled anodized aluminium for direct wall installation. Subframe not necessary. Door striker seal.
Concealed hinges.
Technical information:
Opening width_cm 90
Opening height_cm 210
Rough opening_cm 99
Rough opening_cm 214,5
Frame thickness_cm 5,5



Designer_Andr e Putman



System of partition for workplace: office, meeting room, operational areas. Building with high performance components: structure of aluminium profiles, double glass panels with cavity insulation, insulated infill, swing doors made of safety glass.

Rendering



Rendering



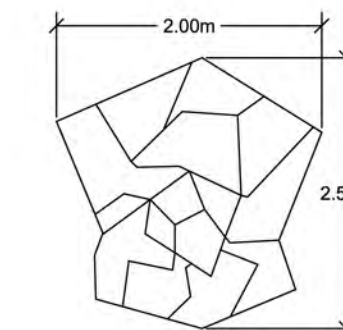
Rendering



Molteni & C

Rug / tappeto

Designer_Gio Ponti



Scala 1:50

Molteni & C renews its focus on the masters of architecture and design with a project aimed at recreating furniture and furnishings designed by Gio Ponti. He was an architect, industrial designer, painter, teacher at the Politecnico, and founder of the magazine Domus in 1928. After a long research and study regarding the prototypes and thanks to the sole right agreement signed with Ponti's heirs, the collection Molteni & C, produced under the art direction of Studio Cerri&Associati, includes furnishings and furniture produced for private homes or for small series in the Fifties and in 1935 for the Montecatini chair.

Technical information:

Top part_Cattle hides with fur

Lower part_Linen blend cloth



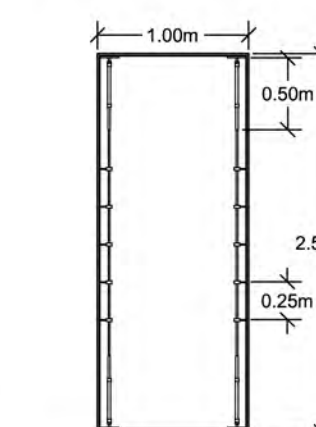
Zoom Cojin besides being an attractive decoration element, invites you to sit or lie down on the hot surface of the carpet, eliminating excessive formalities and postures to promote relaxation. Its asymmetrical shape allows you to break the order of a room too rational or too narrow a geometric distribution.



The materials natural solidity and its ability to be shaped, engraved, and combined with other materials make it ideal for innovative seating, tables, bookshelves, cabinets, and many other pieces.



Construction Detail_Display structure cald in Corian



Trasversal Section Scala 1:50



The ceiling Barrisol Lumi re, thanks to its unique structure allows the diffusion uniform of the light source placed behind.
The model chosen is: CLAIR DE LUNE.
Technical information:
Light transmission_50%
Light reflection_46%
Colour_Shade beige