



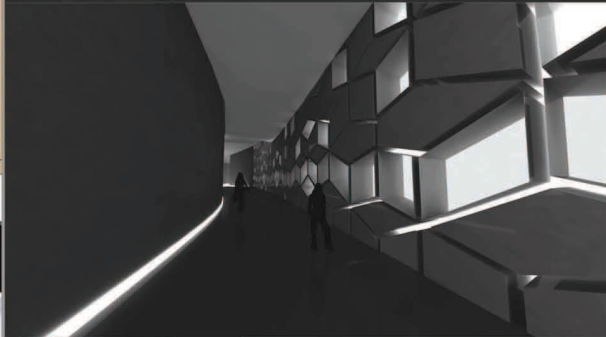
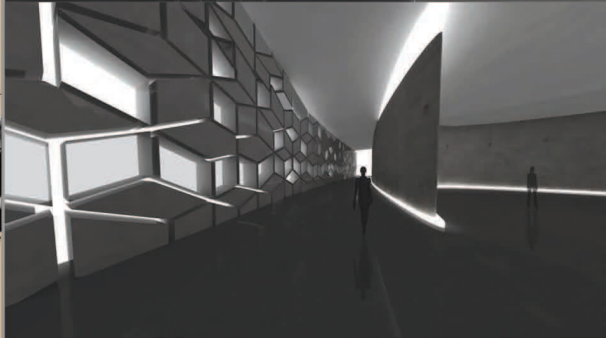
Mariacristina Vitaillano



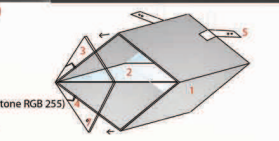
Domenico Tessitore



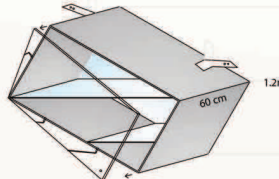
Irene Della Corte



**1. ALUMINIUM SHEETS (ALLOY 5005)**  
-corrosion-resistant  
-high thermal conductivity  
-thermal rigidity  
-rigid planar  
-excellent weldability  
-1 cm thick  
-Sikkens paint ON.00.90 (white pantone RGB 255)  
-sheets to be welded:  
by continuous welding electrodes



**2. SHELF**  
-etched glass  
-bevelled edges  
-6 mm thick  
-glued to sheets with silicone



**3. FRONTAL SURFACE**  
-polished glass  
-5 mm thick  
-opening



**4. PINS**  
-5mm  
-countersunk head  
-hinges with nylon gasket (to avoid fracture of the glass)  
-double lock



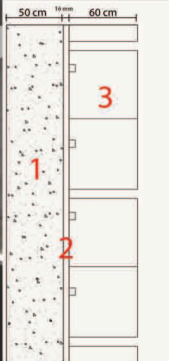
**5. ALUMINIUM PLATES**  
-welded to the sheet metal  
-attached to the wall with nails in pressure fisher 8



**6. GLAZED BACK**  
-etched glass  
-5 mm thick  
-glued to the edges of the sheets with silicone



**7. KNOB**



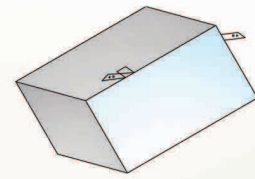
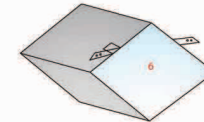
**SECTION WALL**  
1-reinforced concrete (cave wall to reduce the weight)  
2-light wall (LLP FULL LIGHT)  
-LED  
-16 mm thick  
-modules of 200 x 300  
-weight 18 kg/mq  
-monochromatic white light  
-homogeneous light  
3-shelving in aluminum sheet and glass  
**ISOLATED WALL**  
-reinforced concrete cave to reduce the weight, rough  
-LED flexible application (SDM3528)  
-PCV transparent material  
-light intensity 150 Lm/mW  
-distance between leds 1.39 cm, voltage 4.33 V/m  
-points led every 8.33 cm, numbers leds/ meter 72  
-application barrisol

**SECTION FLOORS**  
1-reinforced concrete  
2-coating resin:  
-Thin-film  
-Shiny  
-smooth  
-without joints  
-color asphalt  
-resistant  
-reflective

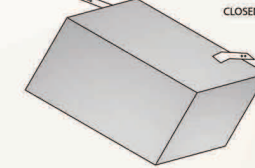
**SECTION CEILING**  
1-drywall  
-fireproof  
-moldable  
-soft  
-water-repellent  
-8-10 cm thick  
-cavity with sound-absorbing and insulating materials



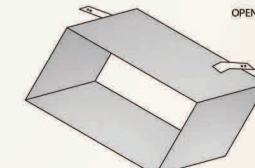
TYPES OF SHELVES



CLOSED STRUCTURES



OPEN STRUCTURES



With the intent to make available the assets, in addition to preserve it, the museum space has been provided with some art installations which have the aim to expose and do as case for the exhibitions houses.

These installations are placed on the walls and adorn them forming a geometric pattern, which in turn is enriched by the light at its back and for the play of solids and voids. Empty space jutting out and full space embedded have the aim to house the relics. These spaces that assume, therefore, the function of theca are lit by LEDs repaired by a sheet of frosted glass. Their reduction in the transparency does not restrict the passage of light, but they filter it so that the showcase is not showing blinding. The plot created by the display cases is reflected in some portions of the floor, made of resin. As well as the light of the walls that finds its continuously below of some panels that fill the space. They like the walls are of exposed reinforced concrete. Their peculiarity is that they recall in small-scale the anatomy of a whale. In elevation, in fact, they give the impression of the fins.

