



DIPARTIMENTO DI ARCHITETTURA E DI SEGNO INDUSTRIALE  
LUIGI VANVITELLI

Seconda Università degli Studi di Napoli  
Dipartimento di Architettura e Disegno Industriale Luigi Vanvitelli  
Corso di laurea in Architettura - Progettazione degli interni e per l'Autonomia  
Insegnamento: A8618 - INTERNO ARCHITETTONICO  
a.a 2013/2014

GRUPPO



Mario Biondi



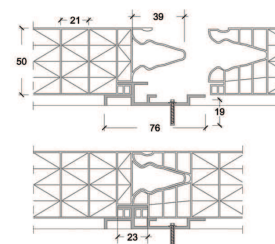
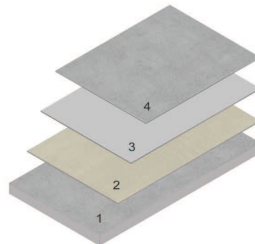
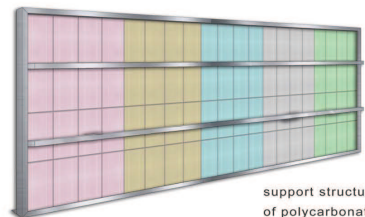
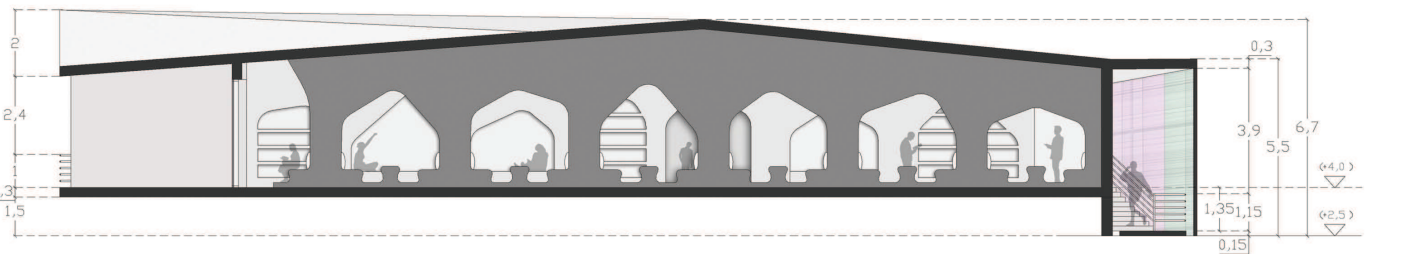
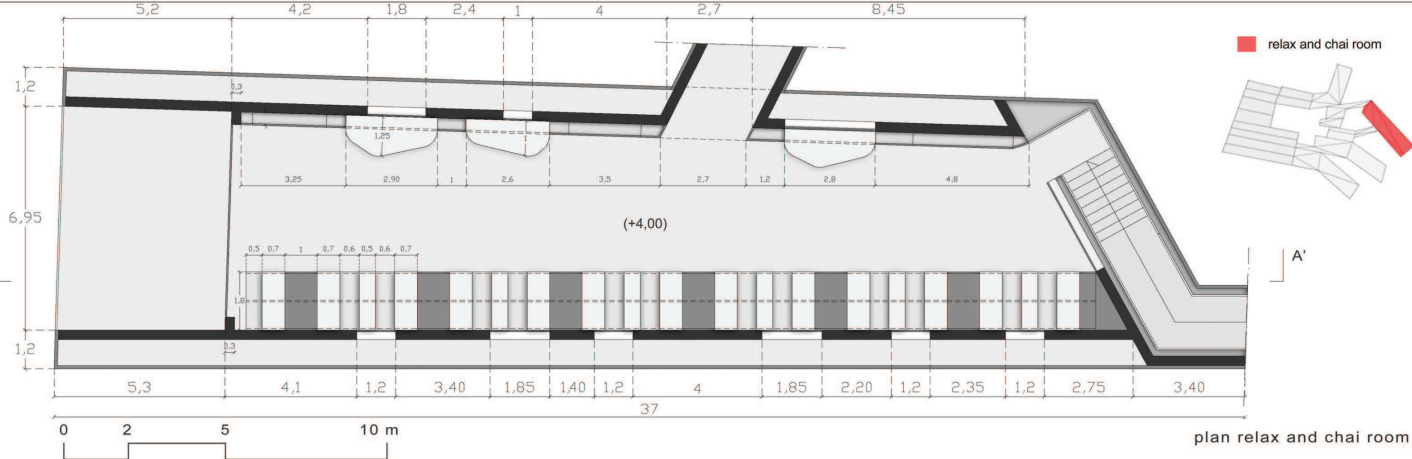
Antonino Mazzaferro



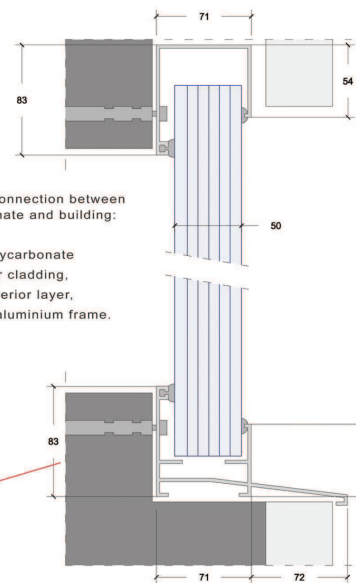
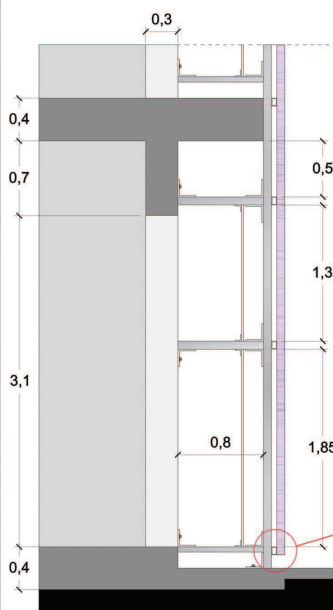
Francesco Palmieri



Model - Canakkale Ceramic Museum  
DOCENTE: PROF. ARCH. CLAUDIO GAMBARDILLA



modular panel alveolar polycarbonate co-extruded UV protected on the outer surface and with aging warranty, the patented tongue and groove, ensures a perfect seal to the water, without the use of sealant,



exposed isometric structure chairs:

1. Svl panel: Panels of wood on one or both sides covered with sheets of veneer 2.5 mm.
2. Corian: thermofomed component dry fitting to the frame.
3. Supporting plywood substructure of the Corian chai table.

