



DIPARTIMENTO DI ARCHITETTURA E DISEGNO INDUSTRIALE  
LEON VANVITELLI

Seconda Università degli Studi di Napoli  
Dipartimento di Architettura e Disegno Industriale  
Luigi Vanvitelli  
Corso di laurea in Architettura - Progettazione degli interni e per l'Autonomia  
Insegnamento: A8618 - INTERNO ARCHITETTONICO  
a.a 2013|2014

GRUPPO



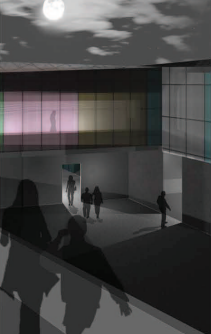
Mario Biondi



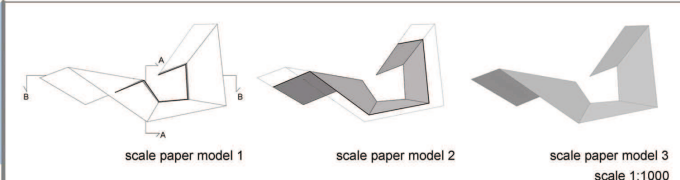
Antonino Mazzaferro



Francesco Palmieri



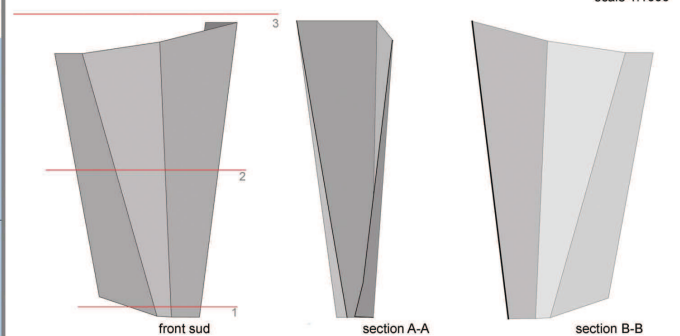
01010 - Canakkale Ceramic Museum  
DOCENTE: PROF. ARCH. CLAUDIO GAMBARELLA



scale paper model 1

scale paper model 2

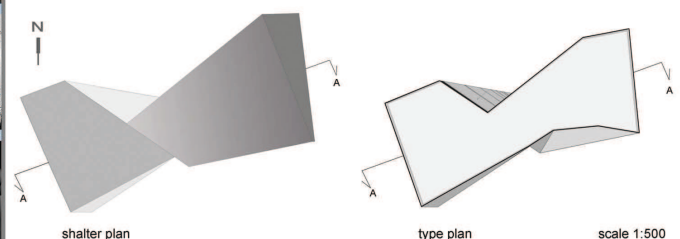
scale paper model 3  
scale 1:1000



front sud

section A-A

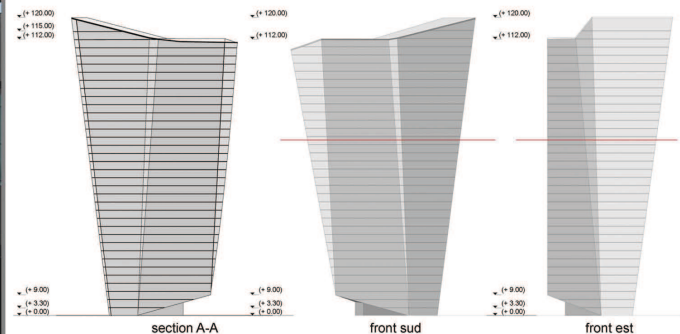
section B-B



shelter plan

type plan

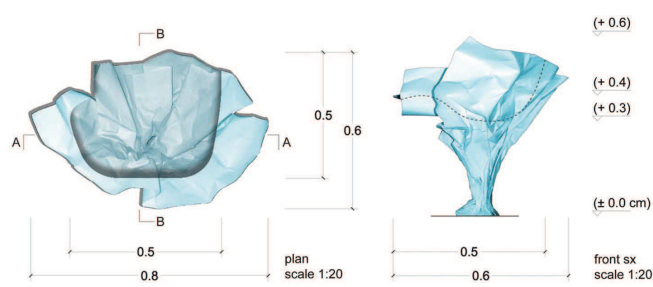
scale 1:500



section A-A

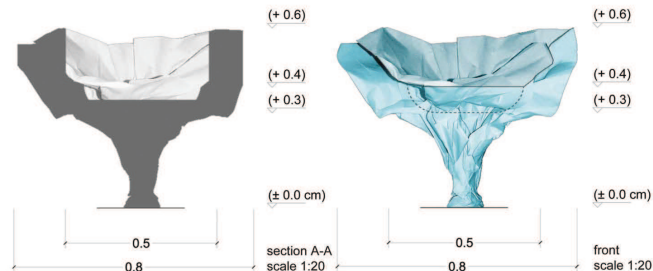
front sud

front est



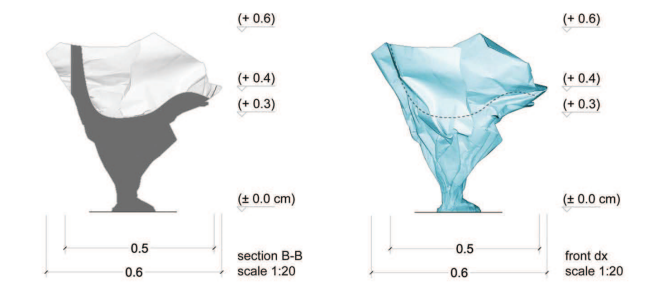
plan  
scale 1:20

front sx  
scale 1:20



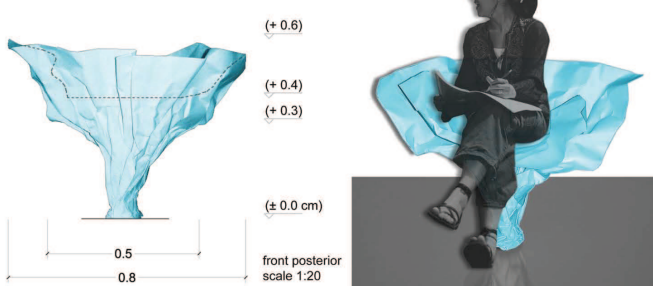
section A-A  
scale 1:20

front  
scale 1:20

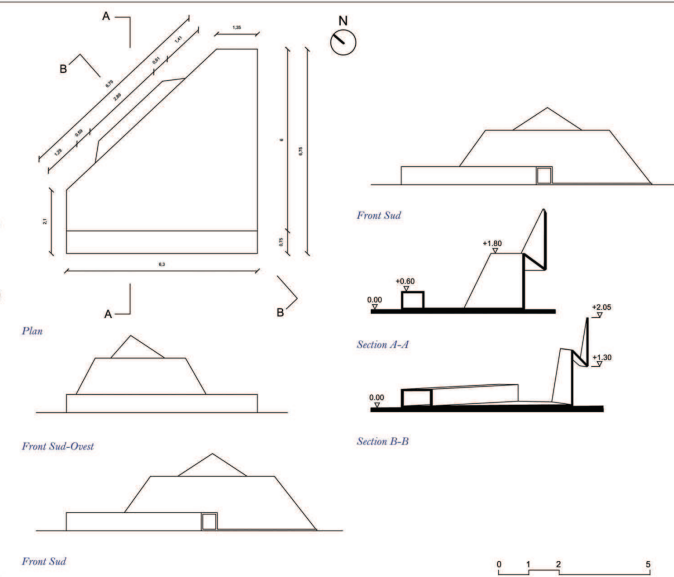


section B-B  
scale 1:20

front dx  
scale 1:20



front posterior  
scale 1:20



Front Sud-Ovest

Section A-A

Section B-B

Front Sud

